



decoy camera

instruction sheet

Please keep these instructions in a safe place for future reference

Contents:

- 1 x dome shaped decoy camera
- 2 x mounting screws
- 2 x plastic wall anchors
- 2 x AA batteries

Battery installation:

1. Open the battery compartment cover
2. Insert 2 AA batteries (included) following the polarity indicators
3. Replace battery compartment cover.
4. Press the dome against the circular base to turn it on (/off)
5. The red LED light will begin to blink to indicate the unit is working.

Installation:

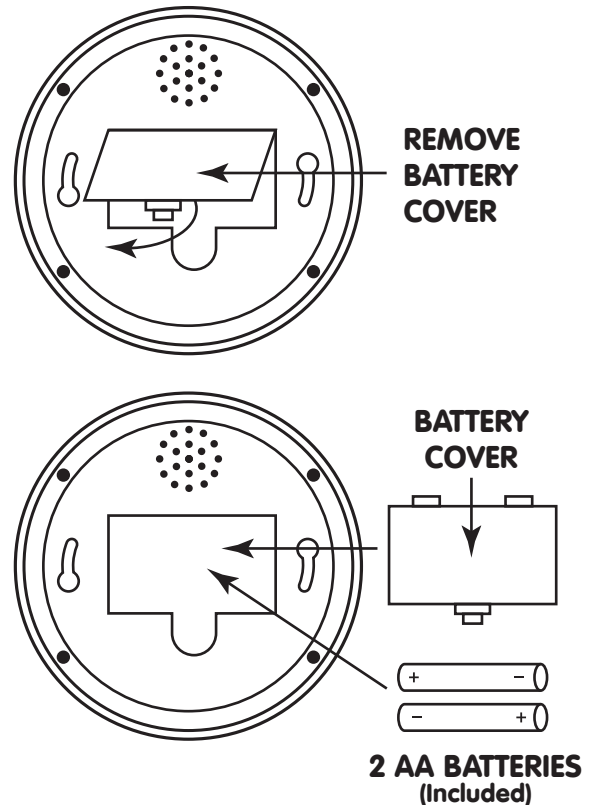
1. Locate the area you want to install the decoy camera ensuring the location is in a sheltered area away from extreme weather, heat or moisture. Do not expose to rain.
2. Secure in place using the mounting screws provided.
3. If installing on a stone or brick surface use the plastic wall anchors provided

Notes:

- Please note that this decoy camera has been designed to act as a deterrent and does not record any images or sounds. Install this unit in a noticeable area so it is visible to people passing by, giving the impression the area is monitored by a security camera.
- If the red LED light stops blinking it is time to change the batteries.

Caution:

- **Batteries may leak harmful liquids or ignitable materials or explode causing injury and product damage.**
- Do not mix old and new batteries or other battery types
- Replace all batteries of the same kind at the same time
- Replace fully discharged batteries immediately



Note:

This product is designed to be a deterrent. It is an alarm signal. It does not guarantee protection.

