

EASY  
HOME®

# USER GUIDE

## Bagless Upright Vacuum Cleaner



NOW THAT YOU HAVE PURCHASED AN EASY HOME® PRODUCT YOU CAN REST ASSURED IN THE KNOWLEDGE THAT AS WELL AS YOUR MANUFACTURER'S WARRANTY YOU HAVE THE ADDED PEACE OF MIND OF DEDICATED HELPLINES AND WEB SUPPORT

### AFTER SALES SUPPORT

 1-888-367-7373  [customer-service@wk-usa.com](mailto:customer-service@wk-usa.com)

MODEL: FJ142-120-500,5936-14

**2**

YEAR WARRANTY

CLEANING

# Contents

---

- 02 Introduction
- 03 General Information and Safety Instructions
- 05 Parts List and Assembly
- 07 Getting Started
- 09 Other Useful Information
- 12 Warranty Card

---

Congratulations!

You have made an excellent choice with the purchase of this quality Easy Home product.

By doing so you now have the assurance and peace of mind which comes from purchasing a product that has been manufactured to the highest standards of performance and safety, supported by the high quality standards of ALDI.

We want you to be completely satisfied with your purchase so this Easy Home product is backed by a comprehensive manufacturer's 2 year warranty and an outstanding after sales service through our dedicated Helpline.

We hope you will enjoy using your purchase for many years to come.

If you require technical support or in the unlikely event that your purchase is faulty please telephone our Helpline for immediate assistance. Faulty product claims made within the 2 year warranty period will be repaired or replaced free of charge provided that you have satisfactory proof of purchase (keep your receipt safe!). This does not affect your statutory rights. However, be aware that the warranty will become null and void if the product is found to have been deliberately damaged, misused or disassembled.

---

When using an electrical appliance, basic safety precautions should also be observed, including the following. **PLEASE READ AND SAVE ALL INSTRUCTIONS BEFORE USING THE UPRIGHT VACUUM.**

1. Do not use the Vacuum outdoors. It is for household use only.
2. Do not allow the Vacuum to be used as a toy. Close attention is necessary when Vacuum is used by or near children.
3. Do not use the Vacuum with damaged cord or outlet plug. Do not use the Vacuum if it has been dropped, damaged, left outdoors, or dropped in water. Return the Vacuum to the service center for examination, repair or refund.
4. Do not attempt to change accessories while the Vacuum is running.
5. Do not handle the plug or the Vacuum with wet hands
6. Use the Vacuum only as described in this manual. Use only manufacturer's recommended attachments.
7. Do not put any object into openings of the Vacuum. Do not use with any opening blocked. Keep free of dust, lint, hair and anything that may reduce air flow.
8. Keep hair, loose clothing, fingers, and all parts of body away from openings and moving parts.
9. Do not pick up anything that is burning or smoking, such as cigarettes, matches, or hot ashes with the Vacuum.
10. Do not use abrasive materials to clean the Vacuum. Do not immerse the Vacuum in water.
11. Do not pick up liquids with the Vacuum or use on wet floors.
12. Do not use the Vacuum on concrete, tar, or similar rough surfaces.
13. Do not pick up pieces of string or fabrics with the Vacuum.
14. Do not clean frayed carpets or tassels on carpets with the Vacuum.
15. Do not use the Vacuum to pick up flammable or combustible liquids such as gasoline or use in areas where they may be present.
16. Read and follow all operational instructions.
17. Do not use the Vacuum without dust container in place.
18. Store the Vacuum indoors. Store after use to prevent accidents.
19. Do not abuse the power cord. Never carry the Vacuum by the power cord or pull the power cord to disconnect the outlet plug from an outlet; instead grasp the outlet plug and pull to disconnect.

**THIS APPLIANCE HAS A POLARIZED PLUG (ONE PIN IS WIDER THAN THE OTHER) TO REDUCE THE RISK OF ELECTRICAL SHOCK. THIS PLUG IS DESIGNED TO FIT IN A POLARIZED OUTLET ONLY ONE WAY. IF THE PLUG DOES NOT FIT FULLY INTO THE OUTLET, TRY THE PLUG THE OTHER WAY AROUND. IF THE PLUG STILL DOES NOT FIT, CONTACT A QUALIFIED ELECTRICIAN. DO NOT ATTEMPT TO ALTER, DISMANTLE OR FIND ANOTHER WAY AROUND THIS SAFETY FEATURE.**

**WARNING!** Read and understand all instructions. Failure to follow all instructions listed below may result in electric shock, fire or serious personal injury. The warnings, cautions, and instructions discussed in this instruction manual cannot cover all possible conditions and situations that may occur. It must be understood by the operator that common sense and caution are a factor which cannot be built into this product, but must be supplied by the operator.

### **ELECTRIC POWER**

If electric circuit is overloaded with other appliances, your Vacuum may not operate properly. The Vacuum should be operated on a separate electrical circuit from other operating appliances.

### **SAFETY WARNING**

Although your Vacuum is easy to operate, for your safety, the warnings below must be followed:

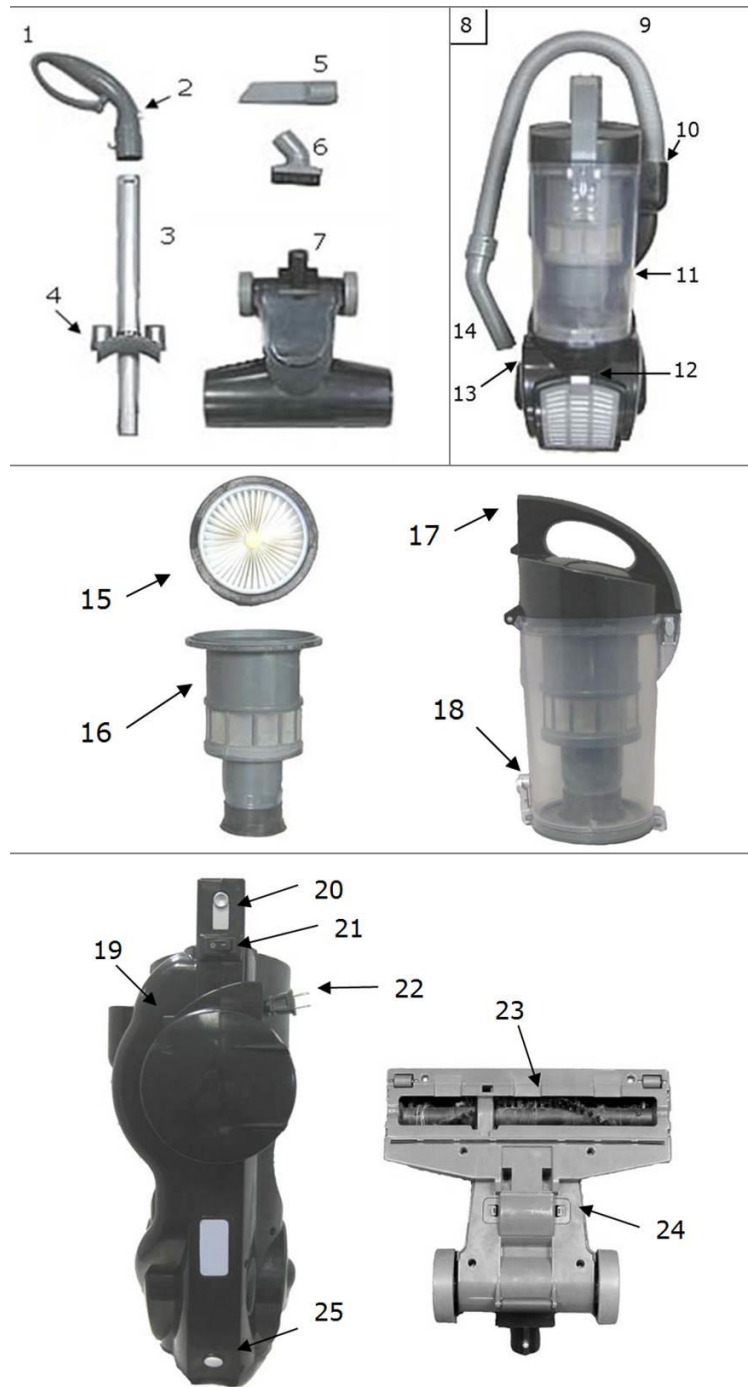
1. Do not place the Vacuum near a heat source.
2. Do not unplug by pulling on the power supply cord.
3. The Vacuum must be unplugged:
  - A. Before any cleaning or maintenance.
  - B. If it appears to be faulty.

**THIS PRODUCT IS INTENDED FOR HOUSEHOLD USE ONLY.**

**SAVE THESE INSTRUCTIONS**

## Main Parts

1. Handle
2. Handle Release Button
3. Handle Pole
4. Tool Storage Clip
5. Crevice Tool
6. Dust Brush
7. Vacuum Head
8. Canister (9 - 14)
9. Hose
10. Hose End and Hose Release Tabs
11. Dust Container
12. Exhaust Filter Release Button
13. Nozzle Receptacle
14. Upholstery Nozzle
15. HEPA Filter
16. Dust Chamber
17. Dust Container Release Button
18. Dust Container Dirt Release Button
19. Cord Rewind Button
20. Handle Pole Release Button
21. ON/OFF Switch
22. Retractable Cord
23. Vacuum Head Brush
24. Air Wheel Cover
25. Vacuum Head Release Button



# Contents of Packaging

1. Instruction Manual
2. Canister
3. Dust Container with Dust Chamber
4. Handle
5. Handle Pole
6. Crevice Tool
7. Dust Brush
8. Hose with attached Upholstery Nozzle
9. Vacuum Head

If any of the above items are missing, please contact our customer service department at 1-888-367-7373 or email us at [customer-service@wk-usa.com](mailto:customer-service@wk-usa.com) for replacements. Our business hours are Mon-Fri 10:00 AM - 5:00 PM EST.

## Assembly

### Attach Vacuum Head

- Insert the vacuum head (7) into the hole on the bottom of the vacuum canister (8). You will hear an audible click.
- To disassemble the vacuum head from the vacuum canister, press the vacuum head release button (25) on the canister, then pull the vacuum head out slowly.

### Attach Handle

- Insert the handle pole (3) into the handle (1) until you hear an audible click. Insert the handle pole, with tool storage clip (4) facing forward, into the hole on top of the canister. You will hear an audible click. Make sure the handle pole is secured.
- To disassemble the handle, press the handle pole release button (20) then slowly pull out handle.

### Attach Dust Container

- Place bottom of dust container (11) onto canister body. Dust container is secure when you hear an audible click.

---

## How to Turn ON/OFF the Upright Vacuum

1. Before using the Vacuum, pull retractable cord out of canister and plug into a power outlet.
2. The upholstery nozzle (14) MUST be placed securely in the nozzle receptacle (13) before use.
3. Press the ON/OFF switch (21), on the back of the canister near the base of the handle to turn the Vacuum ON.
4. Press the ON/OFF switch again to turn the Vacuum OFF.
5. For ease of rewinding, do NOT pull cord out farther than the red tape on the cord. Please note that there is a yellow tape approximately 2 ½ ft. prior to the red tape. To rewind the cord, press the cord rewind button (19) down to retract the cord. NOTE: Use care and guide the power cord with your hand to ensure that the cord does not whip and become tangled while rewinding. You can stop and start the rewinding until the cord is retracted completely.
6. Unplug the power cord after each use

## How to Use the Detachable Canister

1. The detachable canister makes it possible to easily clean stairways, auto interiors and other hard-to-reach areas of the home.
2. Unplug the Vacuum before detaching the canister.
3. Remove the handle pole from the canister.
4. Press the vacuum head release button and pull on the vacuum head to detach.
5. Use the upholstery nozzle or attach one of the accessory tools (dust brush or crevice tool) to the end of the upholstery nozzle.
6. For extended reach, remove the handle from the handle pole and attach the handle pole to the end of the upholstery nozzle. Attach the appropriate accessory to the end of the handle pole.

## How to Use the Accessories

1. The crevice tool (5) is used for cleaning radiators, corners, edges, drawers.
2. The dust brush (6) is used for cleaning curtains, shelves, bookshelves, lamps and other delicate objects.
3. The upholstery nozzle, attached to hose, is used for upholstery.
4. The handle pole (3) is used for extended reach and to add extra strength to your hose.



## How to Empty the Dust Container

1. Press the dust container release button (17) to detach the dust container from the canister.
2. Press the dust container dirt release button (18) at the bottom of the dust container and empty the dust into the trash receptacle.
3. Close the dust container dirt release door.
4. Place bottom of the dust container into the canister. Press firmly until you hear an audible click.

---

## Technical Specifications

Model Number	FJ142L-120-500
Rating Voltage	120V – 60Hz
Rated Wattage	1200W

## Maintenance

**CAUTION:** Always be sure that the Vacuum is turned OFF and UNPLUGGED before cleaning or attempting to store the item. **NEVER IMMERS**E THE MOTOR in water or any other liquid. **NEVER** operate the Vacuum without the dust container and filter in place.

## How to Clean the Filters

1. To maintain optimal performance, the filters should be cleaned every two months under normal use.
2. **HEPA Filter** – The HEPA filter is located under the top dust container lid. Use the top tab to remove the HEPA filter from the dust container. Hold filter over a trash receptacle and tap out dirt and debris.
3. **Exhaust Filter** – The exhaust filter is located at the bottom of the vacuum. Press the catch and pull the exhaust filter grill away from the vacuum. Pull the bottom of the filter outward so the top of the filter unhooks from the filter recess. The exhaust filter can be lightly rinsed with warm tap water. Please make sure that the exhaust filter is completely dry before the next use.

## How to Clean the Dust Chamber

1. Pull the entire dust chamber out of the dust container.
2. Dirt and debris on the dust chamber screen can be cleaned with a soft brush or a slightly damp cloth.

## How to Clean the Dust Container

1. Remove the dust chamber and HEPA filter from the dust container.
2. The dust container can be rinsed with warm soapy water and dried with a soft cloth.  
NOTE: Please make sure that the dust chamber has dried completely before next use.

## How to Clean the Vacuum Head

1. Turn the vacuum head over so the bottom is facing up. Locate the two tabs on either side of the air wheel cover. Squeeze the tabs and remove the air wheel cover.
2. Remove any debris that has gathered around the vacuum head brush. String, hair, or fabric will obstruct brush movement.

## How to Clean the Hose

1. To remove the hose, press the hose release tabs and pull it out of the vacuum canister.
2. Clear away any debris or obstruction from hose. Do not use sharp objects to clean out the hose as they may cause damage.

## How to Clear Clogs

Low suction or poor pick up may be due to a clog in the vacuum canister. If you notice a change in the sound of the motor or a reduction in performance, check for clogs.

**CAUTION:** Always be sure that the Stick Vacuum is switched OFF and unplugged before attempting to remove a clog.

1. Empty dust container.
2. Check dust container for buildup.
3. Check for clog in vacuum head.
4. Check floor tool

## Storing

Store the Vacuum in a dry location. Do not place any heavy items on top of Vacuum during storage as this may result in possible damage of the Vacuum.

**Caution:** Any electronic or electrical appliance should not be stored in or exposed to areas of high heat or humidity. Do not store your Upright Vacuum close to stoves, radiators, furnaces or in a bathroom or bathing area.

## Service Center

If you have any questions in regards to the operation of this Upright Vacuum please contact our service center at:

Wachsmuth & Krogmann, Inc.

Tel: 1-888-367-7373 Email: [customer-service@wk-usa.com](mailto:customer-service@wk-usa.com)

(Business hours Mon - Fri 10:00 AM - 5:00 PM EST)

## Environmental Protection

If the appliance should no longer work at all, please make sure that it is disposed of in an environmentally friendly way.

# Bagless Upright Vacuum Cleaner

Your details:

Name \_\_\_\_\_

Address \_\_\_\_\_  
\_\_\_\_\_  
\_\_\_\_\_

 \_\_\_\_\_ E mail \_\_\_\_\_

Date of purchase\* \_\_\_\_\_

\*We recommend you keep the receipt with this warranty card

Location of purchase \_\_\_\_\_

Description of malfunction:

If you have a malfunction please contact our  
Customer Service Department and send this  
completed warranty card with the receipt to:

Wachsmuth & Krogmann, Inc.

621 IL Route 83

Suite 202

Bensenville, IL 60106

Customer-service@wk-usa.com

## AFTER SALES SUPPORT

 1-888-367-7373  [customer-service@wk-usa.com](mailto:customer-service@wk-usa.com)

MODEL: FJ142L-120-500, 09/14, 5936-14

Phone lines available Monday thru Friday,  
10am - 5pm EST.

**2**

YEAR WARRANTY