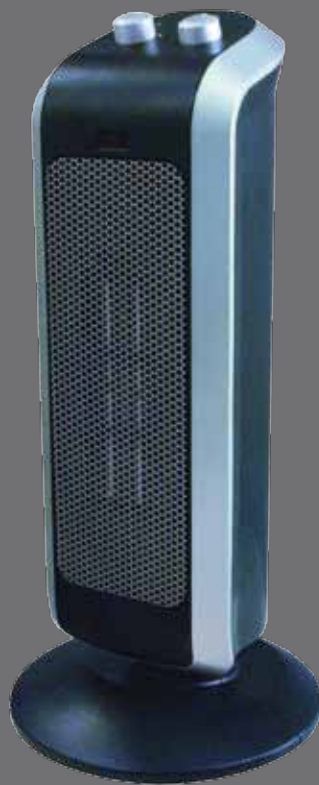


EASY  
HOME®



# USER GUIDE

## OSCILLATING CERAMIC TOWER HEATER



---

NOW THAT YOU HAVE PURCHASED AN EASY HOME® PRODUCT YOU CAN REST ASSURED IN THE KNOWLEDGE THAT, AS WELL AS YOUR MANUFACTURER'S WARRANTY, YOU HAVE THE ADDED PEACE OF MIND OF DEDICATED HELPLINES AND WEB SUPPORT.

---

### AFTER SALES SUPPORT



USA

1 888 367 7373



customer-service@wk-usa.com

MODEL: HC-T15M, 12/14, 9071-14

# 2

YEAR WARRANTY

ACCESSORIES

- 
- 02** Introduction
  - 03** General Information and Safety Instructions
  - 05** Assembly and Parts List
  - 07** Getting Started
  - 09** Other Useful Information
  - 10** Warranty Card

---

Congratulations!

You have made an excellent choice with the purchase of the quality Easy Home product.

By doing so you now have the assurance and peace of mind which comes from purchasing a product that has been manufactured to the highest standards of performance and safety, supported by the high quality standards of ALDI.

We want you to be completely satisfied with your purchase so this Easy Home product is backed by a comprehensive manufacturer's 2 year warranty and an outstanding after sales service through our dedicated Helpline.

We hope you will enjoy using your purchase for many years to come.

If you require technical support or in the unlikely event that your purchase is faulty please telephone our Helpline for immediate assistance. Faulty product claims made within the 2 year warranty period will be repaired or replaced free of charge provided that you have satisfactory proof of purchase (keep your receipt safe!). This does not affect your statutory rights. However, be aware that the warranty will become null and void if the product is found to have been deliberately damaged, misused or disassembled.

When using an electrical appliance, basic safety precautions should also be observed, including the following. **PLEASE READ AND SAVE ALL INSTRUCTIONS BEFORE USING THE CERAMIC TOWER HEATER.**

- This Tower Heater is intended for indoor, non-commercial, household use for temporarily heating residential rooms. Do not use the Tower Heater for any other purpose.
- Do not leave the Tower Heater unattended while it is in use. Always unplug the Tower Heater from the electrical outlet when it is not in use.
- Keep the Tower Heater out of the reach of children and pets. This Tower Heater is not intended for use by children.
- Place the Tower Heater on a flat, steady, stable, heat-resistant surface.
- This Tower Heater has hot parts inside. Do not use it in areas where gasoline, paint, or flammable liquids are used or stored, as there may be a risk of fire or explosion.
- Use the Tower Heater in a well-ventilated area. This Tower Heater is hot when in use. To avoid burns, do not let bare skin touch a hot surface. Use handle when moving this heater. Keep combustible materials, such as furniture, pillows, bedding, paper, clothes, and curtains at least 3 feet (0.9 meters) from all sides of the Tower Heater.
- Use this Tower Heater only as described in this manual. Any other use not recommended by the manufacturer may cause fire, electric shock, or personal injury.
- Do not insert or allow foreign objects to enter any opening on the Tower Heater as this may cause an electric shock, fire, or product damage.
- Do not use this Tower Heater to dry or heat clothing, shoes, pipes, or any other item.
- This Tower Heater is not intended for use in damp/wet locations.
- Never locate Tower Heater where it may fall into a bathtub or other water container.
- Do not move the Tower Heater when it is heated. Allow the Tower Heater to thoroughly cool before handling it.
- Plug the Tower Heater into a standard 120V AC electrical outlet.
- Do not allow the power supply cord to hang (e.g., over the edge of a table or counter) or place/run the power supply cord under rugs, carpeting, or in high-traffic areas where it may be tripped over or pulled.
- To disconnect the Tower Heater, turn the heat select switch to the "OFF" position, then remove the plug from the electrical outlet. Never pull on the power supply cord when disconnecting from power outlet.
- Do not put any stress on the power supply cord where it connects to the Tower Heater, as the power supply cord could fray and break.
- Do not plug or unplug the Tower Heater from the electrical outlet with wet hands.
- Keep the power supply cord and Tower Heater away from heated surfaces.
- Do not operate any heater with a damaged cord or plug, after the heater malfunctions, or has been dropped or damaged in any manner. Return the Tower Heater to a service facility for examination, electrical or mechanical adjustment, or repair.
- To prevent a possible fire, do not block the heat in any manner. In order to avoid overheating, do not cover the Tower Heater. Never cover the front net guard.

**WARNING!** Read and understand all instructions. Failure to follow all instructions listed below may result in electric shock, fire or serious personal injury. The warnings, cautions, and instructions discussed in this instruction manual cannot cover all possible conditions and situations that may occur. It must be understood by the operator that common sense and caution are a factor which cannot be built into this product, but must be supplied by the operator.

## **READ AND SAVE ALL INSTRUCTIONS!**

**CAUTION:** A short power supply cord is provided to reduce the risk of personal injury resulting from becoming entangled in or tripping over a longer cord.

- To avoid a circuit overload when using this Tower Heater, do not operate another high-wattage product on the same electrical circuit.
- Avoid the use of an extension cord because the extension cord may overheat and cause a risk of fire. However if you have to use an extension cord, the extension cord should be rated for 13 amps, 125V, 1625 watts.
- The power supply cord must be arranged so that it will not drape over the countertop or tabletop where it can be pulled on by children or tripped over accidentally.

## **ELECTRIC POWER**

If the electric circuit is overloaded with other appliances, your Tower Heater may not operate properly. The Tower Heater should be operated on a separate electrical circuit from other operating appliances.

## **POLARIZED PLUG**

This Tower Heater has a polarized plug (one blade is wider than the other). As a safety feature to reduce the risk of electrical shock, this plug is intended to fit in a polarized outlet only one way. If the plug does not fit fully in the outlet, reverse the plug. If it still does not fit, contact a qualified electrician. Do not attempt to defeat this safety feature.

## **SAFETY WARNING**

Although your Tower Heater is easy to operate, for your safety, the warnings below must be followed:

1. Do not place the Tower Heater near a heat source.
2. Never leave the Tower Heater unattended while connected to the electrical outlet.
3. To avoid any accidental burns, never put a hand over front net guard or cover when the Tower Heater is in operation.
4. Use the Tower Heater on a stable surface away from water.
5. Do not unplug the Tower Heater by pulling on the power supply cord.
6. The Tower Heater must be unplugged:
  - A. Before any cleaning or maintenance.
  - B. After use.
  - C. If it appears to be faulty.

**THIS PRODUCT IS INTENDED FOR HOUSEHOLD USE ONLY.**

# **SAVE THESE INSTRUCTIONS**



## Main Parts



1. Front Base
2. Tower Heater
3. Power Supply Cord
4. 4 X Base Screws
5. Rear Base

## Contents of Packaging

- Tower Heater
- Front Base
- Rear Base
- 4 X Base Screws
- Instruction Manual

If any of the above items are missing, please contact our customer service department at 1-888-367-7373 or email us at [customer-service@wk-usa.com](mailto:customer-service@wk-usa.com) for replacements. Our business hours are Mon-Fri 10:00 AM - 5:00 PM EST.

1. Remove tie from power cord and unravel the power cord.
2. Connect the front base to the rear base by placing attached pegs into the appropriate holes.
3. Slide the power supply cord through the assembled base from the top. (Fig. 1)
4. Position the connected base pieces where the front base piece is facing in the direction of the front grill.
5. Move base so the screw holes align properly. Using the 4 base screws provided (taped to the Tower Heater), secure the base to the bottom of the Tower Heater. (Fig. 2)
6. Once the base is secured, unscrew one side of the cord holder on the bottom of the base. Place the power supply cord in the slot and replace the screw. The power supply cord should now fit in the groove on the back of the rear base. (Fig. 3)



Fig.1

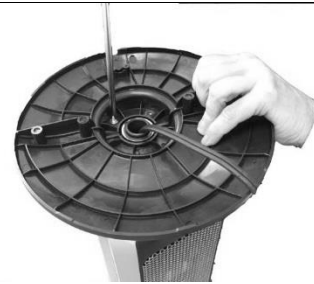


Fig.2



Fig.3

#### CAUTION

Do not use your Tower Heater if it has not been fully assembled. Make sure that the screws that hold the base parts and the main unit together are tightened securely.

## How to Operate

**CAUTION: ALWAYS USE CAUTION WHEN HANDLING THE TOWER HEATER. DO NOT DROP THE TOWER HEATER. DO NOT COVER THE VENTILATION GRILL!**

1. The Tower Heater must be placed on a firm, level surface.
2. Plug the power supply cord into an electrical outlet. Be sure plug fits tightly in outlet. A loose fit will cause overheating and damage the plug. Plug and cord set may feel warm during normal usage. Once plugged in, the power indicator light will illuminate.
3. When turned on, the indicator light will illuminate red. The red indicator light will remain lit until the control knob is turned off and the heater is unplugged from the electrical outlet.
4. **NOTE:** Avoid overloading your circuit by not using other high wattage appliances in the same outlet.



5. Rotate the control knob to the desired function.

OFF	✿	LO	HI
Off	Fan	Low heat mode	High heat mode

6. Turning the Oscillating Switch to the "ON" position will allow the TOWER Heater to oscillate left and right. To stop the oscillation, turn the oscillating switch to the "OFF" position.
7. To turn the Tower Heater OFF, rotate the control knob to "OFF" position, then remove the plug from the wall outlet.



## Safety Protection System

This Tower Heater has protection safeguards that shut off the Tower Heater when components become excessively hot.

### IF OVERHEATED

- If the Tower Heater becomes overheated, it will shut OFF automatically.
- Remove any nearby objects that may be causing overheat conditions. Keep at least three feet of space on all sides of the Tower Heater to allow adequate air circulation.
- Use the Tower Heater in a well-ventilated area.
- Place the Tower Heater on a flat, smooth, stable surface.
- Unplug the Tower Heater from power outlet. Allow Tower Heater to completely cool then plug back into the electrical outlet.

## Troubleshooting

If your Tower Heater shuts off unexpectedly or fails to operate, the above-mentioned safety features may have activated to prevent overheating.

1. Be sure the power supply cord is plugged into a working electrical outlet.
2. The Tower Heater may be off because it has overheated. Unplug the Tower Heater and allow it to cool 15-20 minutes before plugging it back in and turning it ON.

---

## Technical Specifications

Model Number	HC-T51M
Rating Voltage	120V - 60Hz
Rated Wattage	1500W

## Maintenance

**CAUTION:** Always be sure that the Tower Heater is switched OFF, unplugged and cooled completely before cleaning or attempting to store the item. The Tower Heater takes approximately 15-20 minutes to cool completely. **DO NOT IMMERSE IN WATER OR ANY OTHER LIQUID OR ALLOW WATER TO DRIP INTO THE INTERIOR OF THE TOWER HEATER, AS THIS COULD CREATE AN ELECTRIC SHOCK HAZARD.**

### CARE AND CLEANING

- Use a soft, slightly damp cloth to clean the exterior enclosure.
- Never attempt to use gasoline, alcohol or chemical solvent to clean the Tower Heater.
- Store the Tower Heater in a clean, dry place when not in use.

**Please Note:** Regardless of the type of heating system setup, always install and maintain at least one smoke detector in good working condition on each floor of your home. Periodically check and/or replace the battery in your smoke detector with a fresh battery.

### STORING

Store the Tower Heater in a dry location. Do not place any heavy items on top of item during storage as this may result in possible damage.

## Service Center

If you have any questions in regards to the operation of this appliance please contact our service center at:

Wachsmuth & Krogmann, Inc.

Tel: 1-888-367-7373 Email: [customer-service@wk-usa.com](mailto:customer-service@wk-usa.com)

(Business hours Mon - Fri 10:00 AM - 5:00 PM EST)

## Environmental Protection

If the appliance should no longer work at all, please make sure that it is disposed of in an environmentally friendly way.

# OSCILLATING CERAMIC TOWER HEATER

**Your details:**

Name \_\_\_\_\_

Address \_\_\_\_\_

\_\_\_\_\_

 \_\_\_\_\_ E mail \_\_\_\_\_

Date of purchase\* \_\_\_\_\_

\* We recommend you keep the receipt with this warranty card

Location of purchase \_\_\_\_\_

**Description of malfunction:**

If you have a malfunction please contact our  
Customer Service department and send this  
completed warranty card with the receipt to:

Wachsmuth & Krogmann, Inc.

621 IL Route 83

Suite 202

Bensenville, IL 60106

customer-service@wk-usa.com

## AFTER SALES SUPPORT

  1-888-367-7373  [customer-service@wk-usa.com](mailto:customer-service@wk-usa.com)

MODEL: HC-T15M, 12/14, 9071-14

Phone lines available Monday to Friday,  
10am-5pm EST

**2**

YEAR WARRANTY